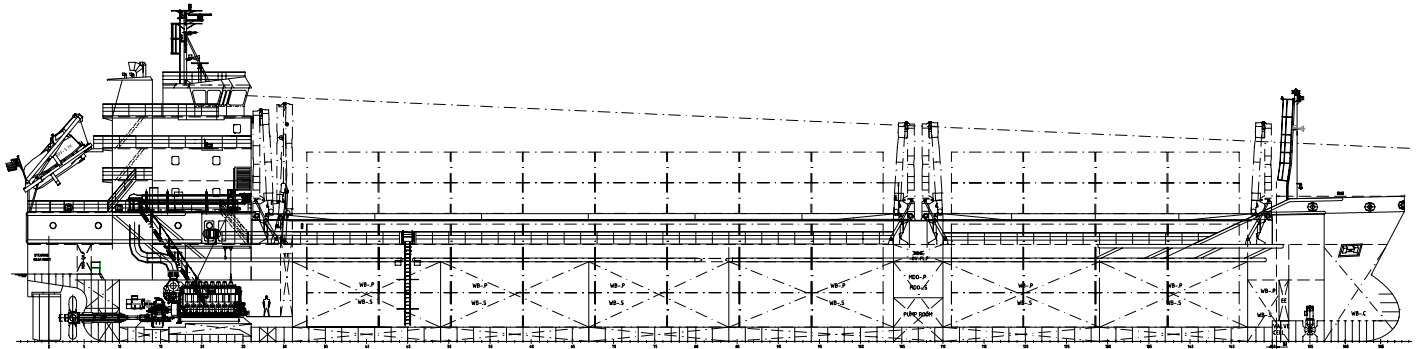


DESIGN-TYPE "abh MPC - Carrier abt. 7.100 tdw



Design: abh INGENIEUR-TECHNIK GmbH

Type of Vessel: Multi-Purpose Container Carrier

Scantling London-Rules: abt. GT 5,300
abt. NT 2,500

Deadweight: abt. 7,100 tdw at D = 6,00 m

Classification: GL + 100 A5 "G" "E3"
"Equipped for Heavy Cargo 14 t/m²"
"Equipped for Carriage of Containers"
+ MC AUT "E3"

Operation Range: abt. 8.500 nm

Main Dimensions:

Length over all	abt.	117,34 m
Length between perp.	abt.	113,03 m
Breadth moulded	abt.	16,50 m
Depth to main deck	abt.	8,20 m
Design Draught	abt.	5,20 m
Scantl. Draught	abt.	6,00 m

Speed: abt. 12,5 kn at D = 5,20 m at abt. 2,200 kW
abt. 13,0 kn at D = 5,20 m at abt. 3,000 kW

Hold Capacity: abt. 332,000 cbf (Grain)
Abt. 324,000 cbf (Bale)

Container Capacity:

in hold	abt.	180 TEU
on deck	abt.	140 TEU
total	abt.	320 TEU

Hatches:

Weather deck hatches:
hold I abt. 25,90 x 13,50 m
hold II abt. 51,10 x 13,50 m
hatch covers: folding type, hatch covers appropriate for 20'/40' containers, 25/35 t stackloads

Hold: Container stackload at double bottom:
75/100 t stackloads 20'/40' Container
Reinforced for steel coils 45 t

Tank Capacities:

Ballast water	abt.	3,300 m ³
MDO	abt.	380 m ³
FW	abt.	80 m ³
Luboil	abt.	12 m ³

Deck's Machinery:

2 comb. anchor winches with 1 mooring drum and 1 warping head
2 electrically driven mooring winches
1 electro hydr. steering gear

Deck's Equipment:

1 free-fall lifesaving boat for 15 persons
2 liferafts for 15 persons each
1 rescue boat
1 combined provision/rescue crane

Special Plants:

bowthruster, fixed pitch propeller, el. driven, abt. 400 kW,
containerfootrests in hold and on hatch cover
remote controlled operated ballast water valves
semi balanced rudder
2 signal masts
2 masts for radar
electr. hold air ventilation, 6-fold airchange
1 grain bulkhead, moveable

Propulsion Plant:

1 engine for MDO, power abt. 3,840 kW, N = 750 rpm
1 elastic coupling
1 marine reduction gear
1 controllable pitch propeller, diameter abt. 3,60 m
1 stern tube oil lub

Aux. Engine Plant:

2 Aux. for MDO abt. 280 kW/350 kVA, TPC const.gen. 220/400 V, 50 Hz
1 emerg. for MDO abt. 100 kW/80 kVA, TPC const.gen. 220/400 V, 50 Hz
1 shaft generator of abt. 480 kW
2 start air compressors
1 MDO separator
2 MDO transfer pumps
1 MDO oil automatic filter
1 lub.-oil separator
1 lub.-oil automatic filter
1 spare lub. oil pump for main engine
1 bilge water separator acc. MARPOL 01.10.1973
4 cooling water pumps (HT/LT)
4 coolers for main and aux. engines
2 ballastwaterpumps, 280 m³/h
1 freshwater pressure tank
1 sewage treatment plant
1 fire-fighting plant for engine room acc. rules
1 emergency fire-fighting pump
1 CO₂-fire-fighting plant for cargo hold/engine room
1 heating, incl. warm water and air-heating in accommodation
1 AC-plant
1 sludge pump

E-Plant:

power	400 V, 50 Hz
lighting	220/400 V, 50 Hz
emergency light	220/400 V, 50 Hz
automation	24 V, DC

Special Plant incl. Nautical Equipment:

1 signal flash light, 1 search light
1 GYRO-compass with autopilot
1 bearing compass on wheelhouse top
1 rudder indicator
2 radar units (sea/river)
1 echosounder, 1 log
2 VHF marine radio stations
1 APN-navigator
1 wireless telegraph (DSC)
1 sound powered telephone
1 radio direction finder
1 microphone
1 EPIRP-sea bouy
complete GMDSS-equipment for A1 and A2

Accommodation:

12 persons

Emden, January 2006