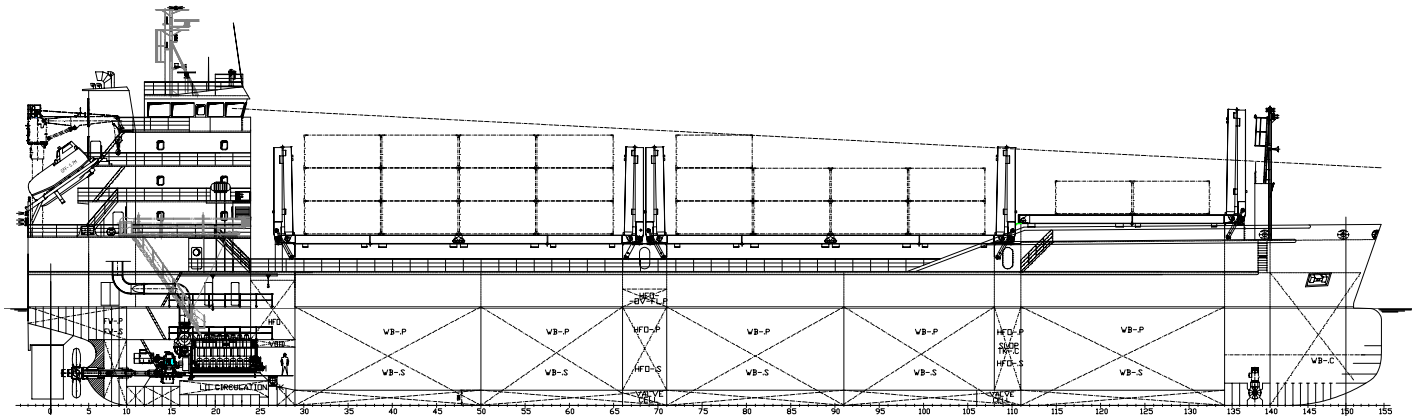


DESIGN-TYPE "abh MPC-General Cargo-8000 abt. 8.000 / 9.500 tdw



Design: abh INGENIEUR-TECHNIK GmbH

Type of Vessel: Multi-Purpose General Cargo

Scantling London-Rules: abt. GT 6.850
abt. NT 3.500

Deadweight: abt. 8.000 tdw at D = 7,10 m
abt. 9.500 tdw at D = 8,00 m

Classification: GL + 100 A5 G E3 BWM
"Equipped for Heavy Cargo 14 t/m²"
"Equipped for Carriage of Containers"
"SOLAS I-2, Reg. 19"
+ MC AUT 24 "E3"

Operation Range: abt. 9.000 nm

Main Dimensions:
Length over all abt. 107,00 m
Length between perp. abt. 103,00 m
Breadth moulded abt. 18,20 m
Depth to main deck abt. 10,50 m
Design Draught abt. 7,10 m
Scantling Draught abt. 8,00 m

Speed: abt. 13,0 kn at D = 7,10 m at abt. 3.000 kW

Hold Capacity: abt. 427.000 cbf (Grain)

Timber Capacity: 0,55t/m³ Weight Factor
in hold abt. 4.865 t => 8.850 m³
on deck abt. 1.760 t => 3.200 m³ (with 3.5 tiers)
total abt. 6.625 t => 12.050 m³

Container Capacity:
on deck abt. 132 TEU => 66 FEU

Hatches: Weather deck hatches:
hold I abt. 16,10 x 15,20 m
hold II + III abt. 25,90 x 15,20 m
hatch covers: folding type, hydraulically operated
hatch covers appropriate for 20'/40'
containers, 50/60 t stackloads

Hold: Reinforced for steel coils 45 t

Tank Capacities:
Ballast water abt. 3.200 m³
HFO abt. 460 m³
MDO abt. 60 m³
FW abt. 60 m³
Luboil abt. 15 m³

Deck's Machinery:
2 comb. anchor/mooring winches, 100 kN pull
2 electrically driven mooring winches
1 electro hydr. steering gear

Deck's Equipment:
1 free-fall lifesaving boat for 13 persons
2 liferafts for 13 persons each
1 rescue boat
1 service crane for free-fall lifesaving boat/provision; SWL 4,2 t
1 combined provision/rescue crane

Special Plants:

FPP bowthruster, el. driven, abt. 450 kW,
Container footrests on hatch cover
remote controlled operated ballast water valves
fully-balanced rudder, high active-type

2 signal masts
2 masts for radar
electr. hold air ventilation, 10-fold air change

Propulsion Plant:

1 engine for HFO, power abt. 3.840 kW, N = 600 rpm
1 elastic coupling
1 CPP propeller
1 stern tube oil lub.

Aux. Engine Plant:

2 Aux. for MDO abt. 380 kW/475 kVA, TPC const.gen. 220/400 V, 50 Hz
1 emerg. for MDO abt. 120 kW/150 kVA, TPC const.gen. 220/400 V, 50 Hz
1 Shaft generator 400 kW/625 kVA
2 start air compressors
2 HFO / MDO separators
2 HFO transfer pumps
2 MDO transfer pumps
1 MDO oil automatic filter
1 thermal oil plant
1 lub.-oil separator
1 lub.-oil automatic filter
1 spare lub. oil pump for main engine
1 bilge water separator acc. MARPOL 01.10.1973
4 cooling water pumps (HT/LT)
4 coolers for main and aux. engines
2 ballastwaterpumps, 350 m³/h
1 freshwater hydrophore tank
1 sewage treatment plant
1 fire-fighting pump for engine room acc. rules
1 emergency fire-fighting pump
1 CO₂-fire-fighting plant for cargo hold/engine room
1 heating, incl. warm water and air-heating in accommodation
1 oil-fired thermo oil boiler, 500 kW
1 AC-plant
1 sludge pump

E-Plant:

power 400 V, 50 Hz
lighting 220/400 V, 50 Hz
emergency light 220/400 V, 50 Hz
automation 24 V, DC

Special Plant incl. Nautical Equipment:

1 signal flash light, 1 search light
1 GYRO-compass with autopilot
1 bearing compass on wheelhouse top
1 rudder indicator
2 radar units (sea/river)
1 echosounder, 1 log
2 VHF marine radio stations
1 APN-navigator
1 wireless telegraph (DSC)
1 sound powered telephone
1 radio direction finder
1 microphone
1 EPIRP-sea bouy
complete GMDSS-equipment for A1 and A2

Accommodation:

13 persons

Emden, March 2006